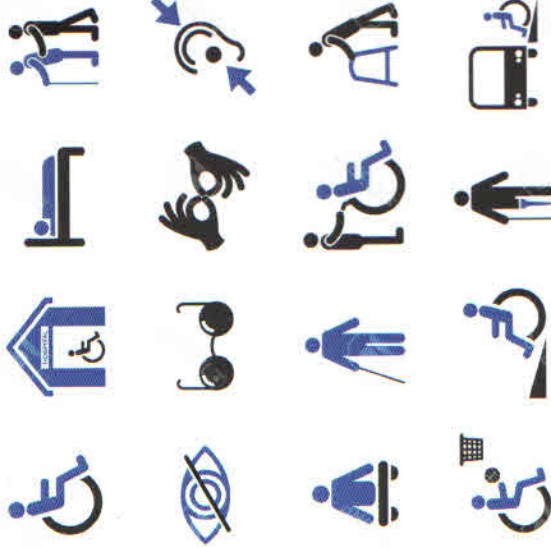




**ACCESS FOR ALL**

Access is creating and maintaining environments in which people can participate in ways, which are Equitable, dignified, maximize independence, conserve Energy, are safe and affordable.



**SIGNANGE**

- Signage include direction and information signs, signs naming the building, signs of locality, street names and room numbering, maps etc.
- External: Should be mounted 2000mm above the floor level, to be easily distinguishable from 2-3 meters distance.
- Internal: Should be mounted on the wall, between 1400mm and 1700mm from the floor level.
- The individual characters between 15mm-50mm tall, raised by 1-1.5mm, bold & color contrasted with their background and also Braille.

• Accessible places and facilities should be clearly identified by the international Symbol of Accessibility.



**KERB RAMP**

- Which should not be less than 1200mm. Its width (x) is less than 1200mm, then slope of the flared side shall not exceed.
- Useful for a smooth transition at pedestrian crossing and in the vicinity of building entrances
- Warning strip to be provided on the kerb side edge of the slope, so that persons with vision impairment does not accidentally walk onto the road.



**FOOTPATH**

- Must be easy to follow, obstruction- free for the convenience of all users.
- Surface should be smooth and level, continuous, firm, non-slip and even.
- Height of the footpath should not be more than 150mm from the road level.
- Consistency in heights and continuity of the footpaths should be maintained.
- Resting places should be provided along travel routes.
- Protruding elements should be avoided.



**PARKING**

- Parking should be within 30 mtrs of the main entrance of the building.
- Two accessible parking lots with overall minimum dimension 3600mm\*5000mm, should be provided.
- It should have the international symbol of accessibility painted on the ground and also on a signpost/board.
- There needs to be directional signs guiding people to the accessible parking.
- Wheel stoppers to be provided, to avoid vehicles to occupy space on the pedestrian pathway.

**RAMPS**

- Gentle slope : 1.15 max.
- Landing : every 750mm of vertical rise.
- Width : 1500mm or more
- Surfaces (ramp+landing) should be slip resistant.
- A ramp should be accompanied by a flight of easygoing steps.
- Warning strip should be placed at 300mm before and after the ram edges.



**STEPS & STAIRS**

- Uniform users: 150mm and tread: 300mm,
- Stair edges should have 50mm wide, contrast colour band
- The maximum height of a flight between landings to be 1200mm.
- Landing should be 1200m deep, clear of any door swing.
- The steps should have an obstructed width of at least 1200mm.
- Warning strip to be placed 300mm at the beginning and at the end of all stairs.
- Nothing should be avoided.



**HANDRAILS**

- Handrails should be circular in section with a diameter of 38mm, at least 50mm clear of the surface to which they are attached, at two levels -760mm and 900 m from the finished floor, extend by at least 300mm beyond the head and foot of the flight and ramp, in the line of travel and grouted in the ground or in the wall.



## TACTILE SURFACE

Ground surface of a different texture allowing for guiding/warning tactile signal for persons with visible impairment.

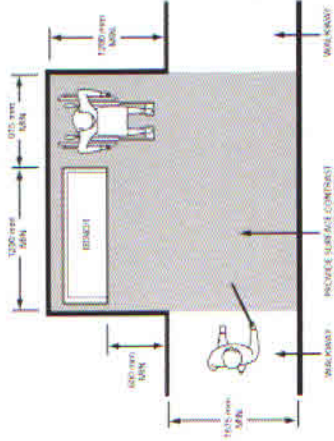
**Line**-type blocks indicate the correct path/route to follow.

**Dot**-type blocks indicate warning signal, to screen off obstacles, drops-offs or other hazards, to discourage movement in an incorrect direction and to warn of a corner or junction.



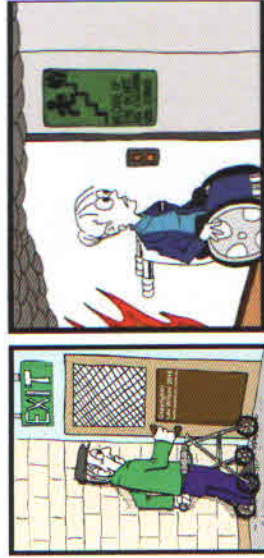
## CIRCULATION AREA

- Corridors should have an unobstructed width of 1800mm and to be well lit.
- Level differences should be beveled.
- Thresholds and gratings should not be more than 10mm.
- Protruding objects (more than 100mm from the wall) to be placed either in a niche or above 2100mm from the floor.



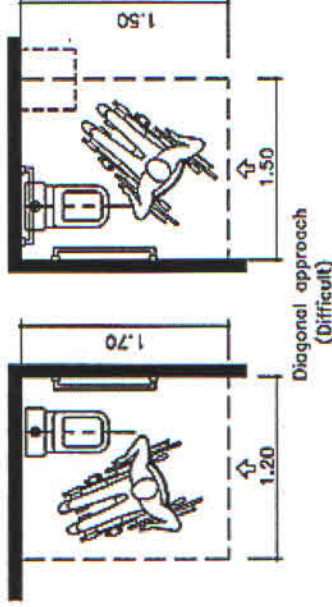
## DOOR

- Should be provide a clear opening of 900mm min.
- Also be fitted with vision panels at least between 900mm and 1500mm from floor level.
- Be colour contrasted with the surrounding walls and should not be heavier than 22N to open.
- Kick plates are recommended 300mm from the bottom, to resist wear and tear.



## ACCESSIBLE TOILET

- A minimum of one toilet compartment should have enough floor space for wheelchair users to enter and exit.
- Minimum clear floor space of 2000mm \* 2000mm.
- Provide a door of clear opening of at least 900mm with the door swing outwards or be folding or sliding type.
- Should have slip resistant flooring.
- Door should have horizontal pull bar at least 600mm long inside and 140mm long on the outside, at height of 700mm.



## WATER CLOSET

- WC centerline be located between 460mm to 480mm from the adjacent wall.
- The top of the WC to be 450mm to 480mm from te floor.
- Have a back support.
- Grab bars should be provided. On te transfer side U-shape Movable type and on the wall side L- shape grab bar is preferd.

## WASH BASIN

- Be of dimensions 520mm and 410mm, so mounted that the top edge is between 700mm-800mm from the floor.
- It should have a knee space of at least 760mm wide by 200 deep, by 650mm-680mm high.
- Lever type handles for taps are recommended.
- Mirror's bottom edge to be 1000mm from the floor and the mirror may be inclined at an angle.

## PUBLIC DEALING COUNTER

- Should not be more than 800mm from the floor, with a minimum clear knee space of 700mm high and 280mm-300mm deep.
- Lighting should be positioned to illuminate the receptionist, staff, obscuring facial detail and making lip reading difficult.
- Staff manning the Counters should know sign language.

## PUBLIC TELEPHONE

- Maximum height of the highest part of a telephone: 1200mm.
- Maximum height of a telephone (knee space for wheelchair user) 650mm-680mm. Minimum floor/ground space: 1200mm\*900mm.
- Guiding path to be provided to guide persons with vision impairment to public telephones.

## LIFT

- Floor: Minimum space for wheel chair users 1500mm\*1500mm.
- Doors: 900mm wide and closing mechanism to be adjusted to give adequate entry time.
- Control Panel: Inside the lift to be on both the sides.
- Call Button & control Panel: At reach of 800mm-1000mm at least 450mm from any corner.
- Key plans, orientation signs and push buttons in lifts should have a text in Braille and raised letters.



## EMERGENCY EVACUATION

- Audible fire alarms to be supplemented by fishing lights to alert persons with hearing impairment. Clear, well illuminated signage indicating escape routes is essential.
- Fire Refugee Area at the landing of a fire escape stair case, quipped with two-way communication gadgets with clear signage, flashing bulbs & audio signals should be provided to facilitate emergency evacuation.

## OTHER POINTS TO REMEMBER

- Induction Loop System/FM System should be provided for persons with hearing impairment in public dealing, service and information counters, classrooms, auditoriums, cinema halls, conference rooms, etc.



# Dr. Shivajee Kumar

## State Commissioner Disabilities

Office of State Commissioner for Persons with Disabilities  
Social Welfare Department

Govt. Of Bihar,  
Old Secretariat, Sinchai Bhawan,  
Patna - 800 015

Mobile:+91 9431015499  
Ph: 0612-2215041

Email:scdisability2008@gmail.com  
Fax:+91 (0612) 2215152

